

## Montageanleitung der Adapter Kombination 2301/2331/2304/2334 Deckel ohne Auflagefläche

Mounting instructions for the adapters  
Combination 2301/2331/2304/2334  
Cover without support surface

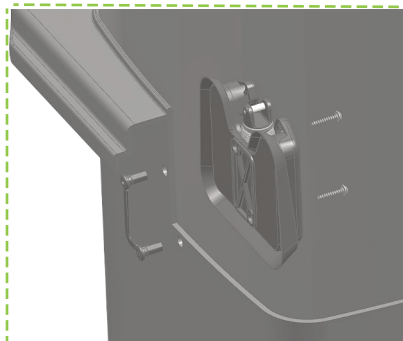
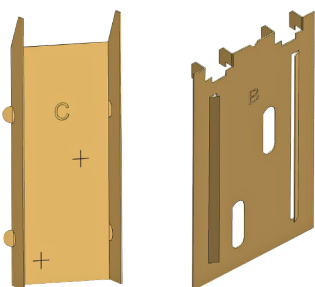
**Automatic**

2-Rad Behälter  
2-wheel container

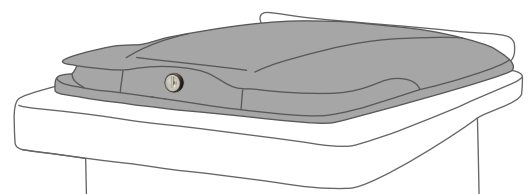
Verpackungsinhalt  
box content



Bohrschablone Tonne (B,C)  
Drilling jig bin (B,C)



Maximales  
Anzugsmoment aller  
Schrauben zur  
Endmontage am  
Behälter **3NM**  
Maximum tightening  
torque of all screws for  
final assembly on the  
container **3NM**



Die SUDHAUS Schlösser sind für folgende Gewichte ausgelegt:  
Volumen der Tonne (gemäß Herstellerangaben) x 0,4.  
SUDHAUS locks can be used to a maximum weight of:  
Volume of the dust-bin (according to manufacturer's) x 0.4.

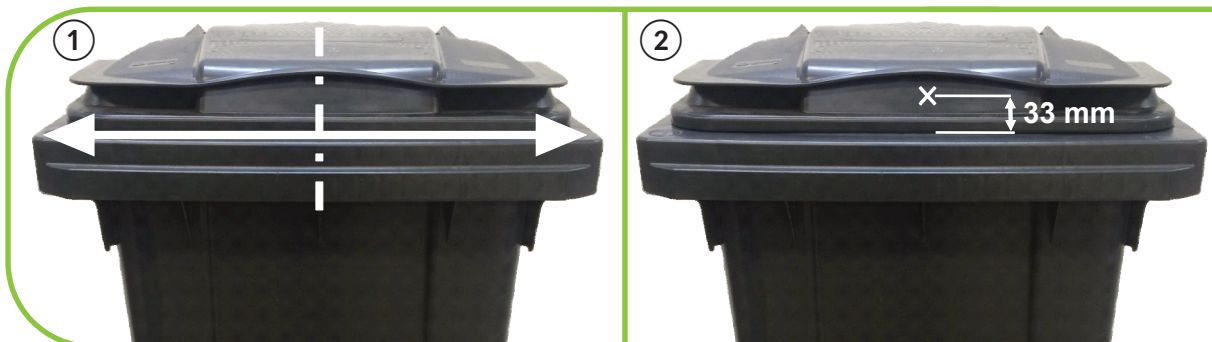
MADE IN GERMANY 13-06-2023



SUDHAUS GmbH  
Tel: +49 (0)2371 906-0

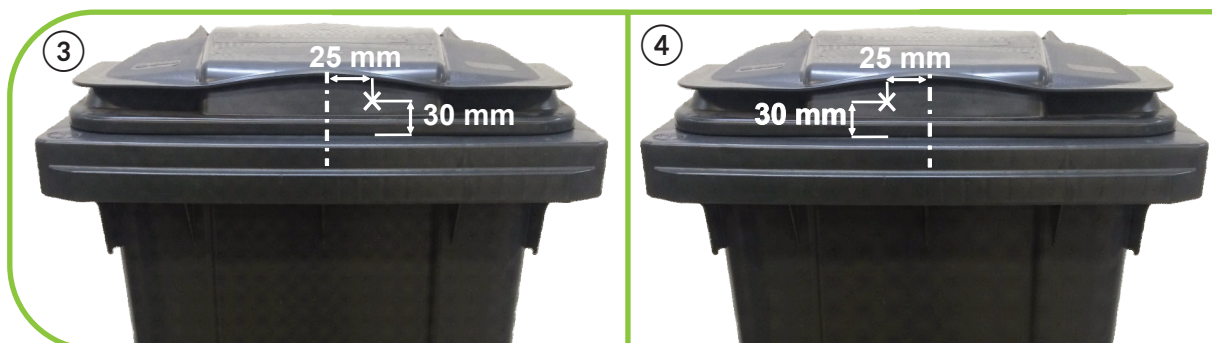
Teichstraße 5  
Mail: info@sudhaus.de

58644 Iserlohn  
www.sudhaus.de



1 Mitte am Tonnenkörper markieren  
*mark garbage can center*

2 Bohrposition abmessen und markieren  
*Drilling position Measuring and marking*



3 Rechte Bohrposition abmessen und markieren  
*Right drill position Measure and mark*

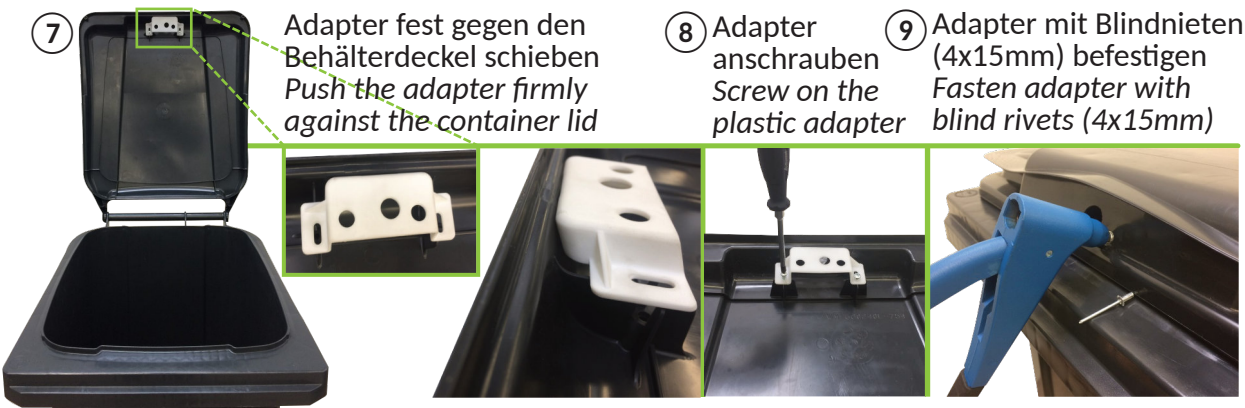
4 Linke Bohrposition abmessen und markieren  
*Left drill position Measure and mark*

\*mit einem  $\varnothing$  5mm Holzbohrer vorbohren  
*\*with a  $\varnothing$  5mm pre-drill wood drill*



5 Mittlere Markierung mit 20mm Holzbohrer bohren  
*Drill middle mark with 20mm wood drill bit*

6 Rechte und Linke Markierung mit 5,0mm Holzbohrer bohren  
*Drill right and left mark with 5.0mm wood drill*

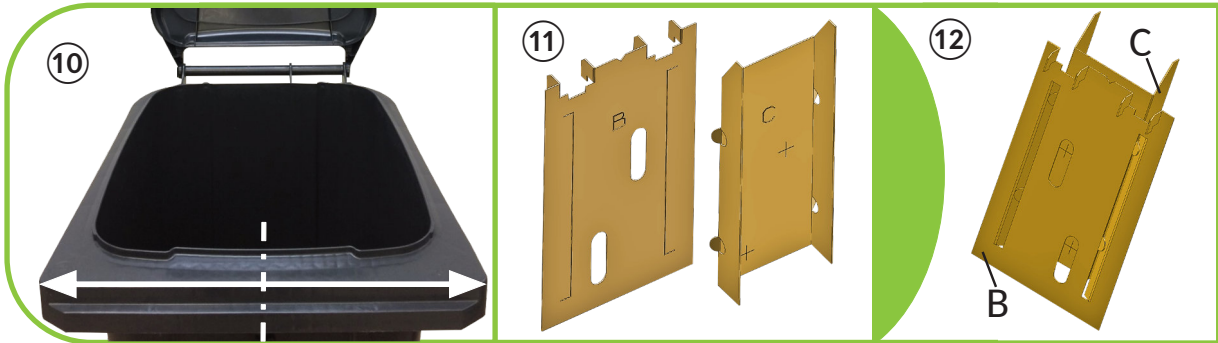


7 Adapter fest gegen den Behälterdeckel schieben  
*Push the adapter firmly against the container lid*

8 Adapter anschrauben  
*Screw on the plastic adapter*

9 Adapter mit Blindnieten (4x15mm) befestigen  
*Fasten adapter with blind rivets (4x15mm)*





10 Mitte am Tonnenkörper markieren  
mark garbage can center

11 Schablonen B, C falten  
fold drilling jig B,C

12 Schablonen B, C verbinden  
assemble drilling jig B,C



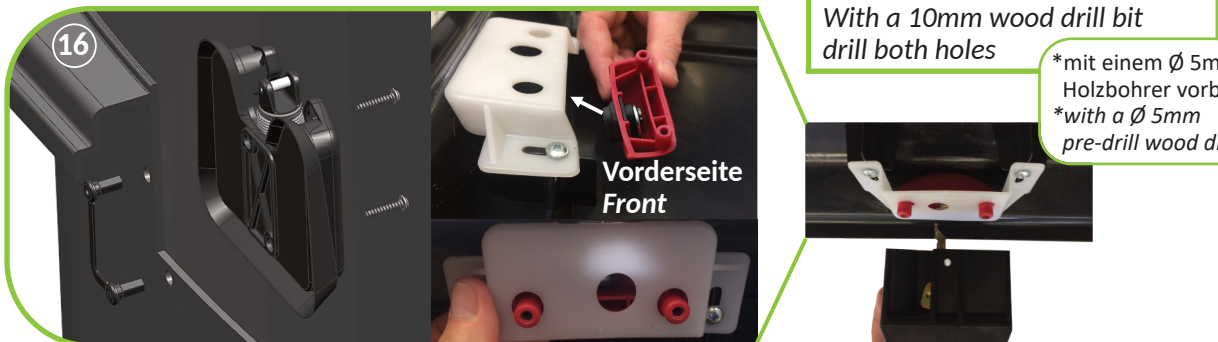
13 Schablone an Markierung positionieren;  
C in oberste Stellung bringen  
Position the template at the mark;  
move C to top position

14 Deckel **vorsichtig** schließen um C in  
Position zu bringen  
Close the lid **carefully** to bring C into  
position

15 Deckel öffnen; 2 Bohrlöcher  
markieren; Schablone entfernen;  
open cover; mark 2 drill holes  
remove template

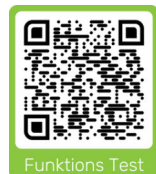
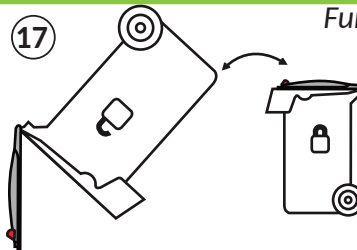
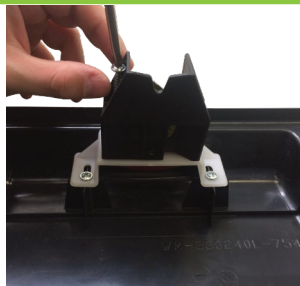
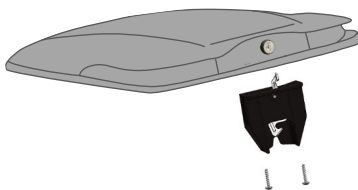
Mit einem 10mm Holzbohrer  
beide Löcher bohren  
With a 10mm wood drill bit  
drill both holes

\*mit einem  $\varnothing$  5mm  
Holzbohrer vorbohren  
\*with a  $\varnothing$  5mm  
pre-drill wood drill



16 Komponenten anbringen & befestigen; Deckeloberteil Frontal einsetzen  
Attach and fasten components; insert the upper lid section frontally

17 Funktion testen  
Function test



MADE IN GERMANY 13-06-2023



SUDHAUS GmbH  
Tel: +49 (0)2371 906-0

Teichstraße 5  
Mail: info@sudhaus.de

58644 Iserlohn  
www.sudhaus.de